

Instruction for quick set up USB modem MF180S

Step-by-step



MTS Connect
on basis of EDGE/GPRS/UMTS



Contents

Introduction	3
Set	3
Technical Specifications	3
Recommendations on Hardware and Software	4
Step-by-step user manual for the modem	4
Step 1. Inserting SIM-Card into Modem	4
Step 2. Connecting Modem to the computer	6
Step 3. Installing Software onto the Modem	6
Step 4. Starting the MTS Connect Application	7
Step 5. Disconnecting Modem from the computer	7
Step 6. Uninstalling MTS Connect Application	8

1. Introduction

This manual is assigned for giving help to a user in subscription to **MTS Connect** on basis of EDGE/GPRS/UMTS service and describes terminal equipment ZTE MF180S, software Easy Wireless Net and typical questions, which a customer may have while subscribing and using the service. The manual contains the section describing stepwise the detailed process of subscription to **MTS Connect** service. The content and the order of each step of the manual can vary in compliance with the changes, made in hardware and software.

2. Set

- MF180S Modem;
- Instruction for quick set up;
- Warranty Card.

3. Technical Specifications

- data Download speed:
at EDGE/GPRS Mode – up to 236 kbps,
UMTS – up to 384 kbps,
HSDPA – up to 3,6 Mbps
(the real data transfer speed depends on the network service capacity);
- HSDPA/UMTS/EDGE/GPRS/GSM Support
(850/900/1800/1900/2100 MHz).

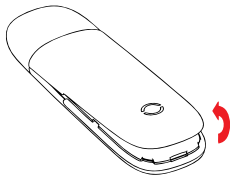
4. Recommendations on Hardware and Software

- processor with tact frequency no less then 500 MHz;
- operative memory 128 Mb;
- free USB Port;
- minimum 30 Mb of free hard disk space;
- Operating Systems:
Microsoft Windows 2000/XP/Vista/7;
Mac OS 10.1 and later versions.

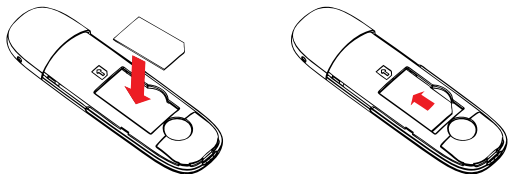
5. Step-by-step user manual for the modem

Step 1. Inserting SIM-Card into Modem

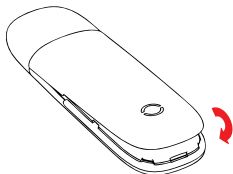
Remove the front panel of the modem as shown on the picture below.



Insert SIM-Card into the holder as it is shown on the picture.

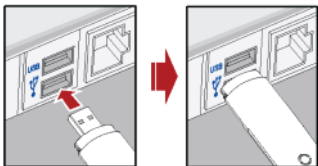


Mount the front panel of the modem. You will hear one click when the front panel is installed in its place.



Step 2. Connecting Modem to the computer

Insert Modem into the free USB-port. The modem is inserted correctly in case when the indicator on the modem case lights.



Step 3. Installing Software onto the Modem

Once a modem is connected to PC/notebook, the operating system shall automatically find a new device and run the Installation Wizard.

Choose the interface language and click **OK**.


Afterwards, following the Setup Wizard guidelines, choose the directory for saving the driver on your PC and install the driver.

Press **Finish** to finish the installation.

After Modem setup is over, **MTS Connect** Application will run automatically. Further Modem management is accomplished through the Connect application.


Use  icon to start the **MTS Connect** application.

Step 4. Starting the MTS Connect Application

In order to start the application double-click  icon on the desktop of your PC. Enter PIN-code of the SIM-Card when the respective message pops up.

Step 5. Disconnecting Modem from the computer

Note: please, do not disconnect the device from your PC before doing the following, since it can damage the PC:

Double-click  button on tool bar. The message saying «Disconnect or unplug the device» will pop up.

Choose the drive that needs disconnection and click **OK**.

After you see the message saying «Now you can disconnect the device», click **OK** and disconnect Modem from the PC.

Step 6. Uninstalling MTS Connect Application

Enter the Start Menu.

Choose Management tool bar.

Find **MTS Connect** tag and click “Add/delete application” in order to uninstall it.

Note: after finishing the uninstall procedure it is recommended to restart the PC in order to make sure the **MTS Connect** Application is deleted.